



Parilla

X30 125cc RL - TaG

2005 CATALOGO PARTI DI RICAMBIO
SPARE-PARTS CATALOGUE
CATALOGUE PIECES DETACHEES

COP-282

IAME

LINEA MOTORI 2005 - 2005 MOTOR LINE - LIGNE DES MOTEURS 2005

Parilla X30 125cc RL - TaG

RAFFREDDAMENTO LIQUIDO - WATERCOOLED ENGINE - REFRROIDISSEMENT LIQUIDE



Alesaggio - Bore - Alésage = 54 mm
Corsa - Stroke - Course = 54 mm
Max. Alesaggio - Max. Bore - Max. Alésage = 54.28 mm

Con frizione e avviamento elettrico
With clutch and electric starter
Avec embrayage et démarreur électrique

IAME

LINEA MOTORI 2005 - 2005 MOTOR LINE - LIGNE DES MOTEURS 2005

Parilla X30 125cc RL - TaG

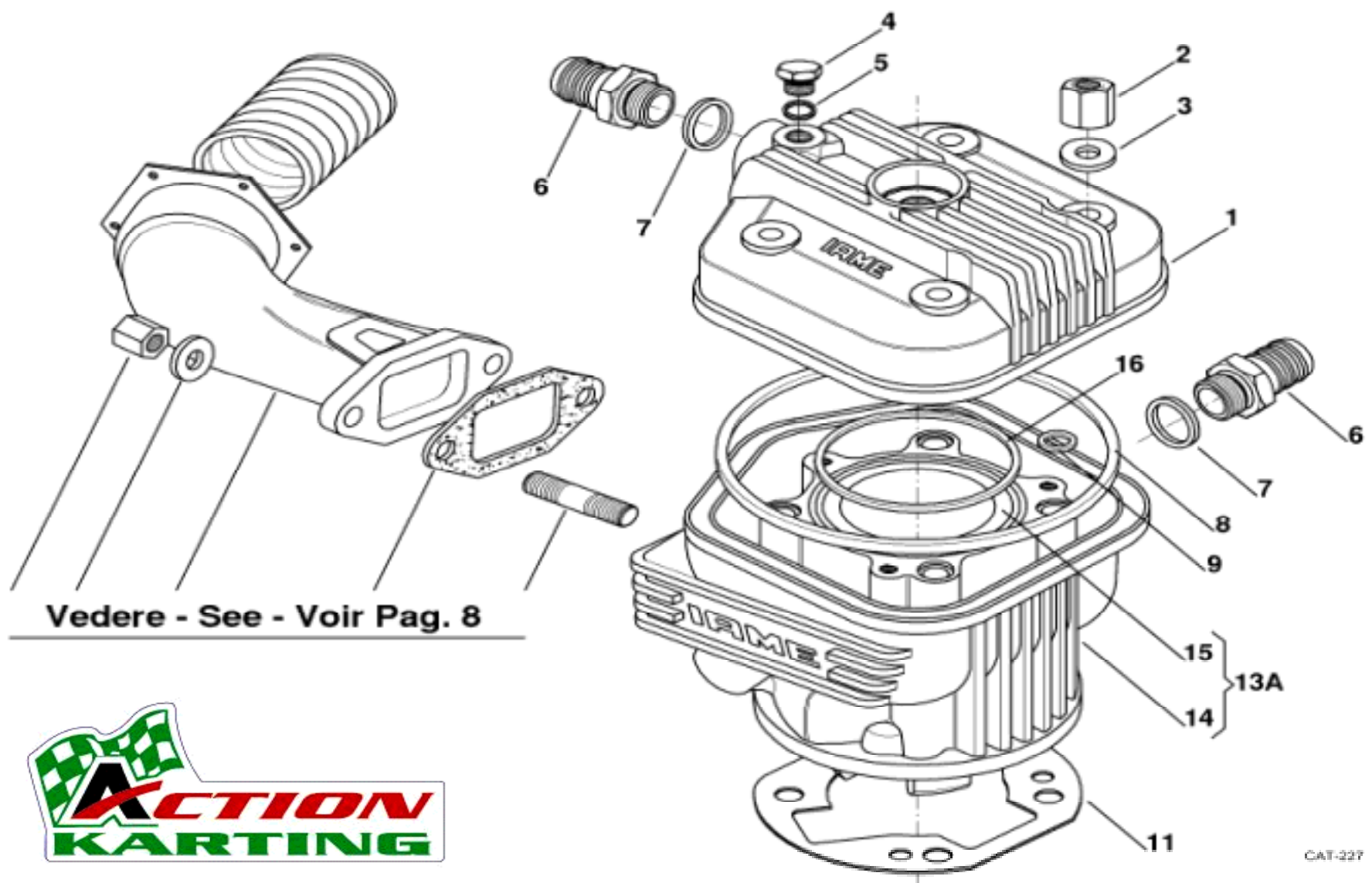
RAFFREDDAMENTO LIQUIDO - WATERCOOLED ENGINE - REFRROIDISSEMENT LIQUIDE



Alesaggio - Bore - Alésage = 54 mm
Corsa - Stroke - Course = 54 mm
Max. Alesaggio - Max. Bore - Max. Alésage = 54.28 mm

Con frizione e avviamento elettrico
With clutch and electric starter
Avec embrayage et démarreur électrique

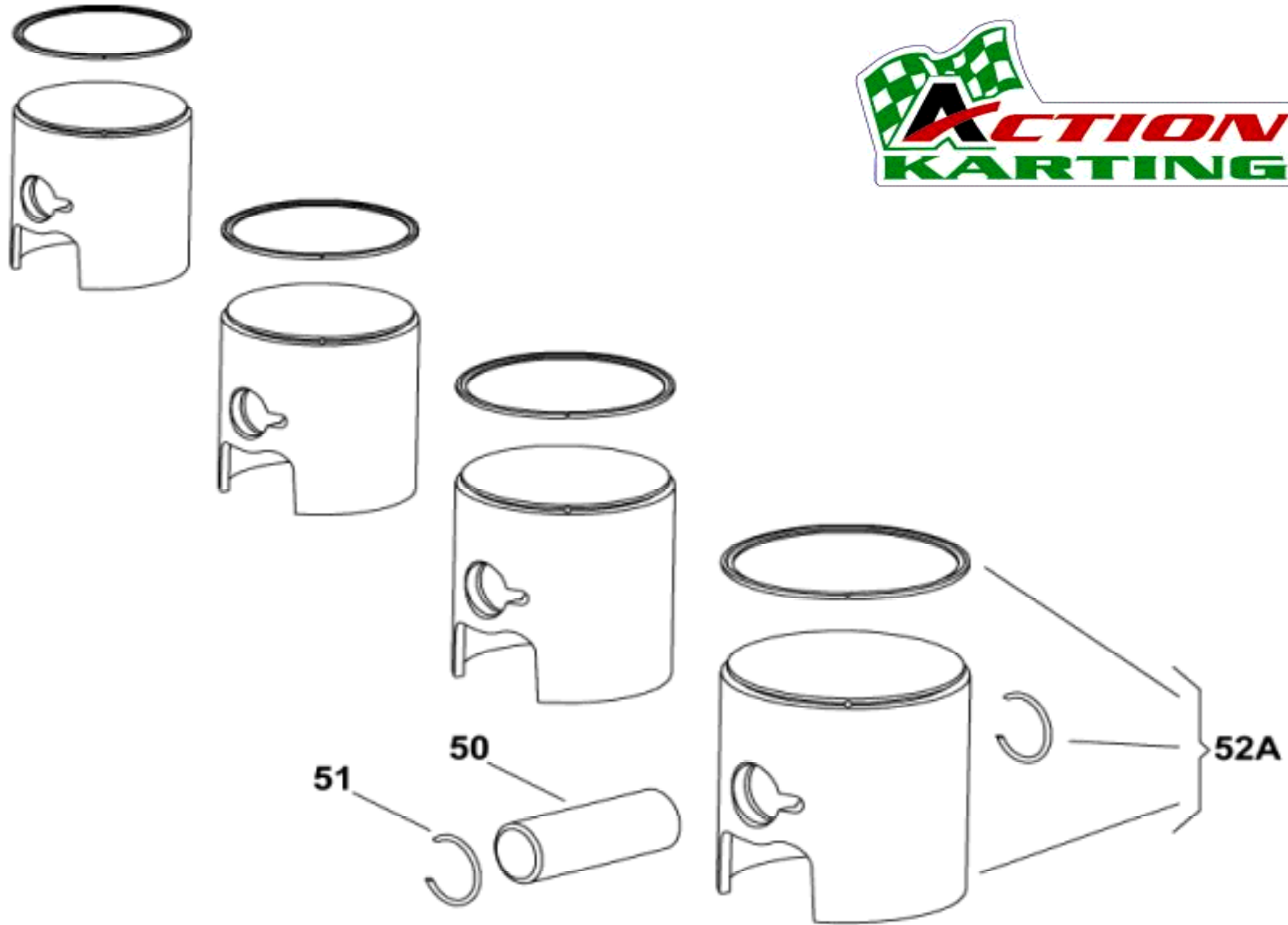
TESTA E CILINDRO - HEAD AND CYLINDER - CULASSE ET CYLINDRE



Vedere - See - Voir Pag. 8



PISTONE - PISTON - PISTON

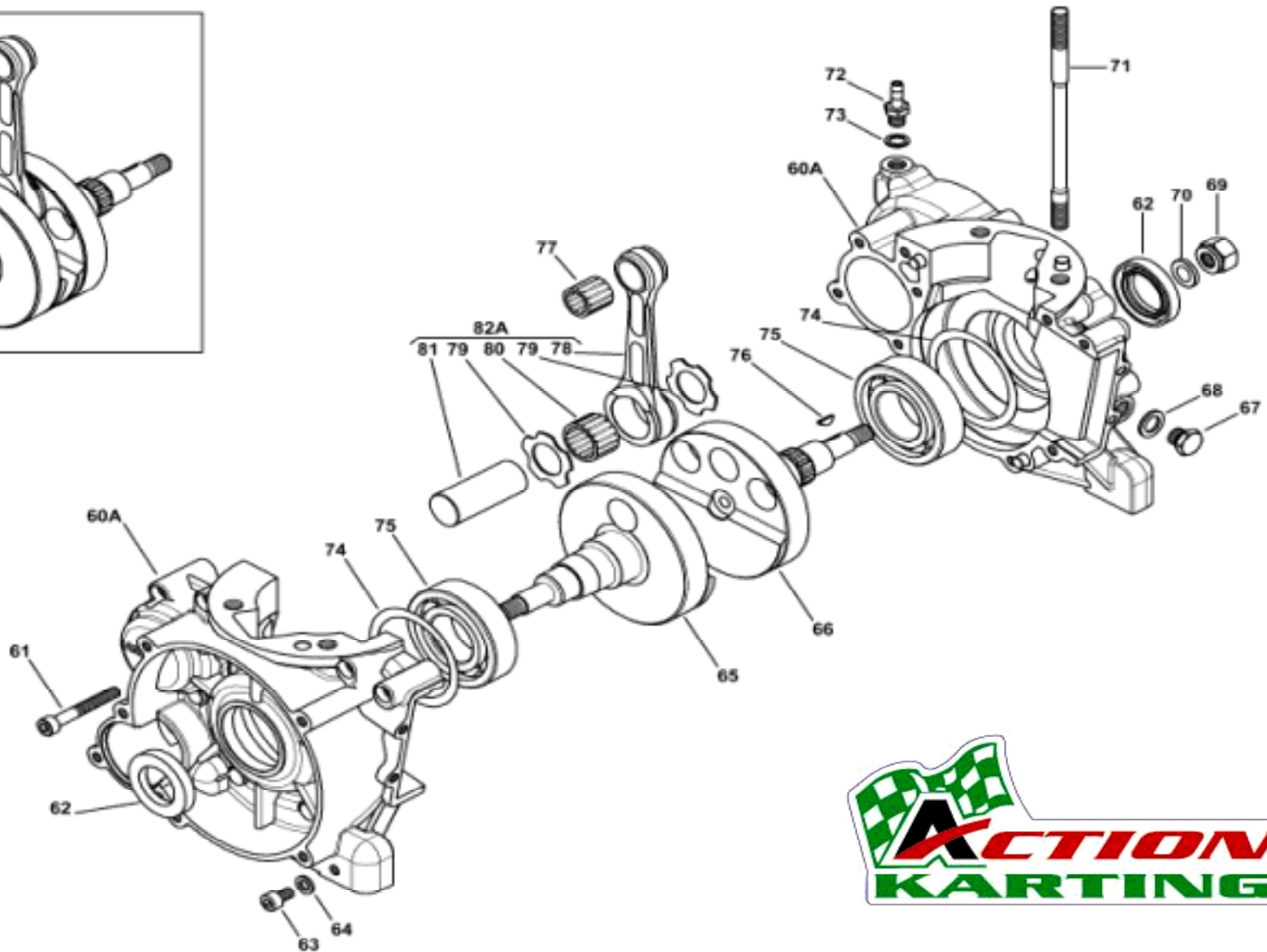
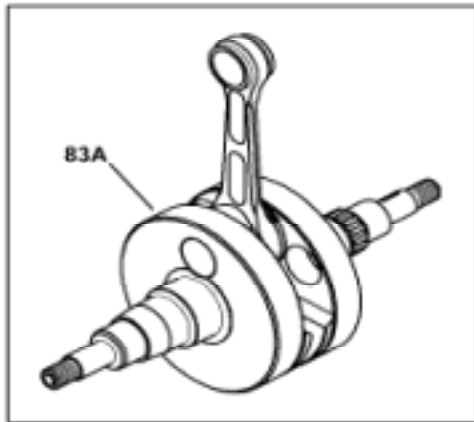


Parilla X30 125cc RL-TaG

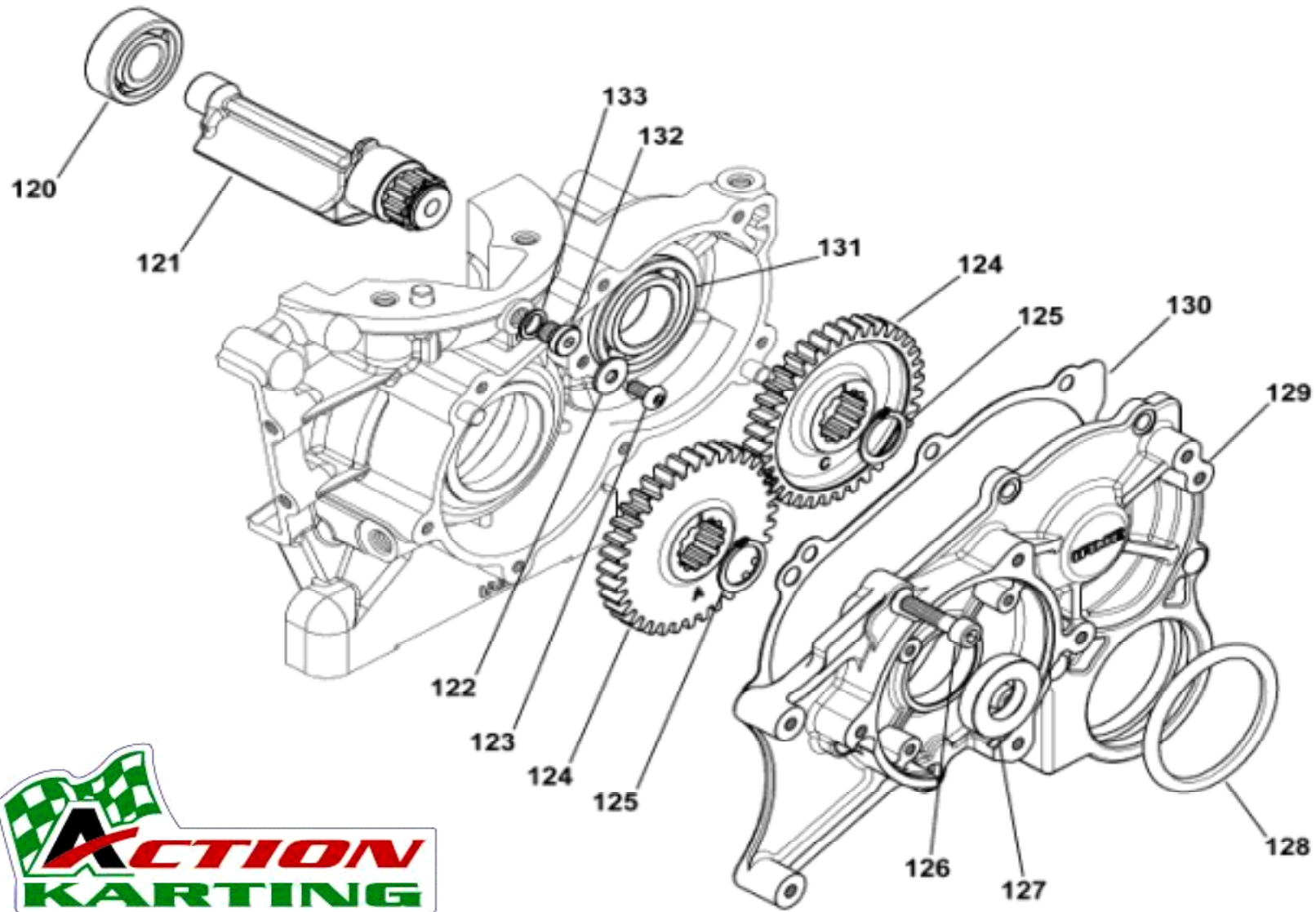
PISTONE - PISTON - PISTON

Fig.	Code		Dim.			X30 125cc RL-TaG							Prix TTC Euro	
						Descrizione	Description	Description						
50	B-30320-R	SPINOTTO 1^ selezione	14x44	Piston PIN 1^ sel.	Axe de piston 1^ sel.	X								12,75
50	B-30320-B	SPINOTTO 2^ selezione	14x44	Piston PIN 2^ sel.	Axe de piston 2^ sel.	X								12,75
50	B-30320-G	SPINOTTO 3^ selezione	14x44	Piston PIN 3^ sel.	Axe de piston 3^ sel.	X								12,75
51	10341-A	ANELLINO ferma spinotto	14x1.2	CIRCLIP	Circlips axe de piston	X								0,75
52A	BP-25051-CV	PISTONE completo verde	54,00 v	Complete green PISTON	Piston complet vert	X								85,00
52A	BP-25051-CR	PISTONE completo rosso	54,00 r	Complete red PISTON	Piston complet rouge	X								85,00
52A	BP-25056-CV	PISTONE completo verde	54,02 v	Complete green PISTON	Piston complet vert	X								85,00
52A	BP-25056-CR	PISTONE completo rosso	54,02 r	Complete red PISTON	Piston complet rouge	X								85,00
52A	BP-25058-CV	PISTONE completo verde	54,05 v	Complete green PISTON	Piston complet vert	X								85,00
52A	BP-25058-CR	PISTONE completo rosso	54,05 r	Complete red PISTON	Piston complet rouge	X								85,00
52A	BP-25061-CV	PISTONE completo verde	54,10 v	Complete green PISTON	Piston complet vert	X								85,00
52A	BP-25061-CR	PISTONE completo rosso	54,10 r	Complete red PISTON	Piston complet rouge	X								85,00
52A	BP-25066-CV	PISTONE completo verde	54,12 v	Complete green PISTON	Piston complet vert	X								85,00
52A	BP-25066-CR	PISTONE completo rosso	54,12 r	Complete red PISTON	Piston complet rouge	X								85,00
52A	BP-25068-CV	PISTONE completo verde	54,15 v	Complete green PISTON	Piston complet vert	X								85,00
52A	BP-25068-CR	PISTONE completo rosso	54,15 r	Complete red PISTON	Piston complet rouge	X								85,00
52A	BP-25071-CV	PISTONE completo verde	54,20 v	Complete green PISTON	Piston complet vert	X								85,00
52A	BP-25071-CR	PISTONE completo rosso	54,20 r	Complete red PISTON	Piston complet rouge	X								85,00
52A	BP-25076-CV	PISTONE completo verde	54,22 v	Complete green PISTON	Piston complet vert	X								85,00
52A	BP-25076-CR	PISTONE completo rosso	54,22 r	Complete red PISTON	Piston complet rouge	X								85,00
52A	BP-25081-CV	PISTONE completo verde	54,25 v	Complete green PISTON	Piston complet vert	X								85,00
52A	BP-25081-CR	PISTONE completo rosso	54,25 r	Complete red PISTON	Piston complet rouge	X								85,00
52A	BP-25086-CV	PISTONE completo verde	54,27 v	Complete green PISTON	Piston complet vert	X								85,00
52A	BP-25086-CR	PISTONE completo rosso	54,27 r	Complete red PISTON	Piston complet rouge	X								85,00

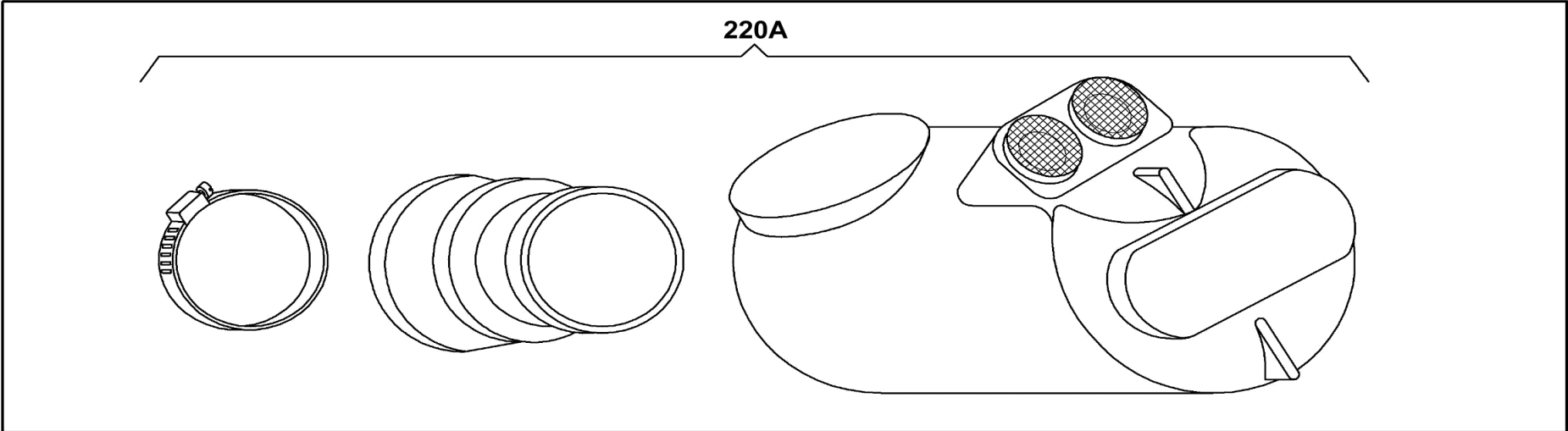
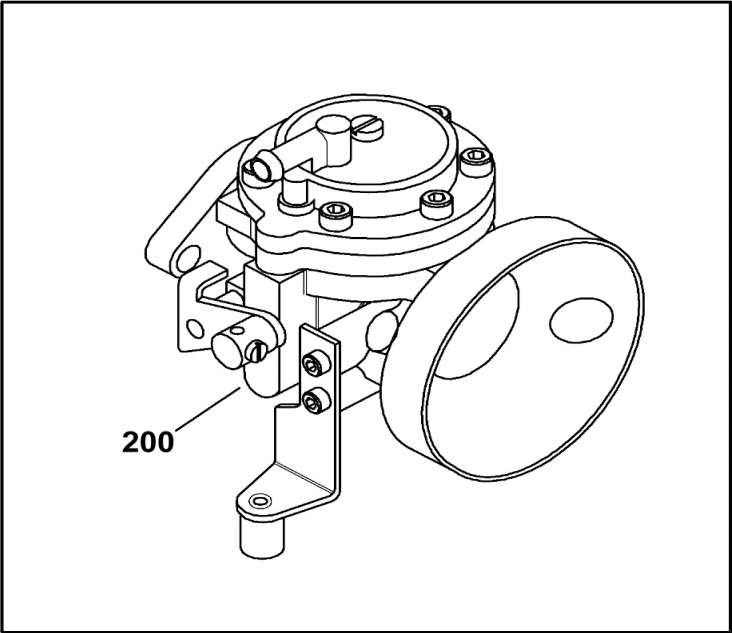
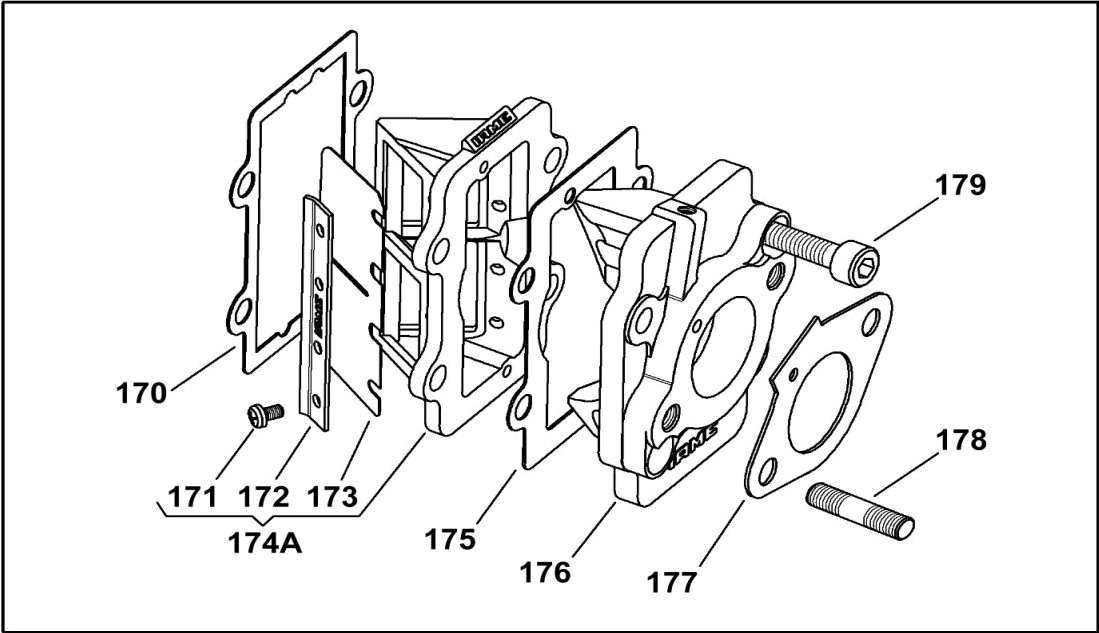
BASAMENTO E ALBERO MOTORE - CRANKCASE AND CRANKSHAFT - CARTER ET VILEBREQUIN



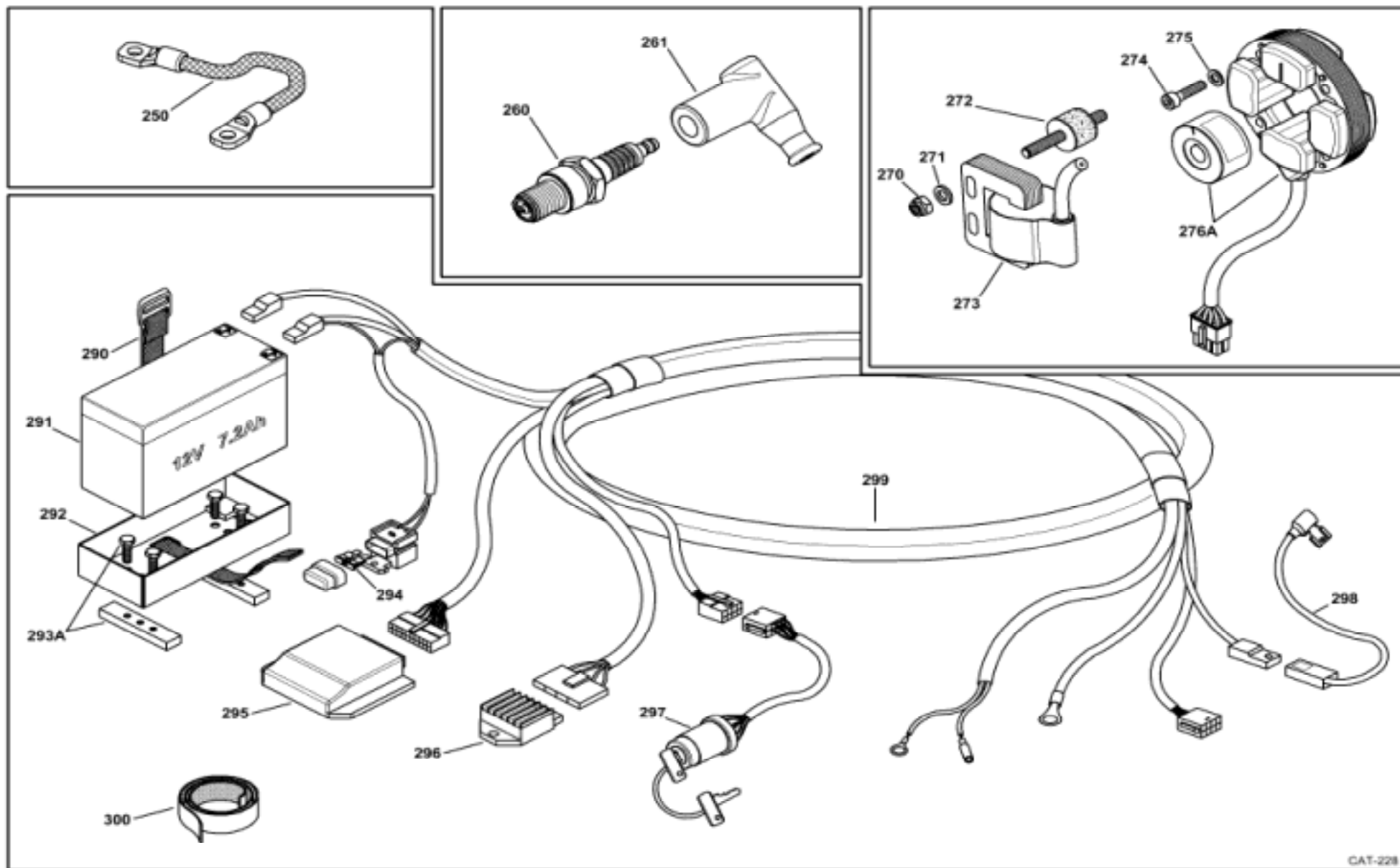
ALBERO DI EQUILIBRAMENTO - BALANCING SHAFT - ARBRE D'EQUILIBRAGE



AMMISSIONE / INLET / ADMISSION



ACCENSIONE ELETTRONICA - ELECTRONIC IGNITION - ALLUMAGE ELECTRONIQUE



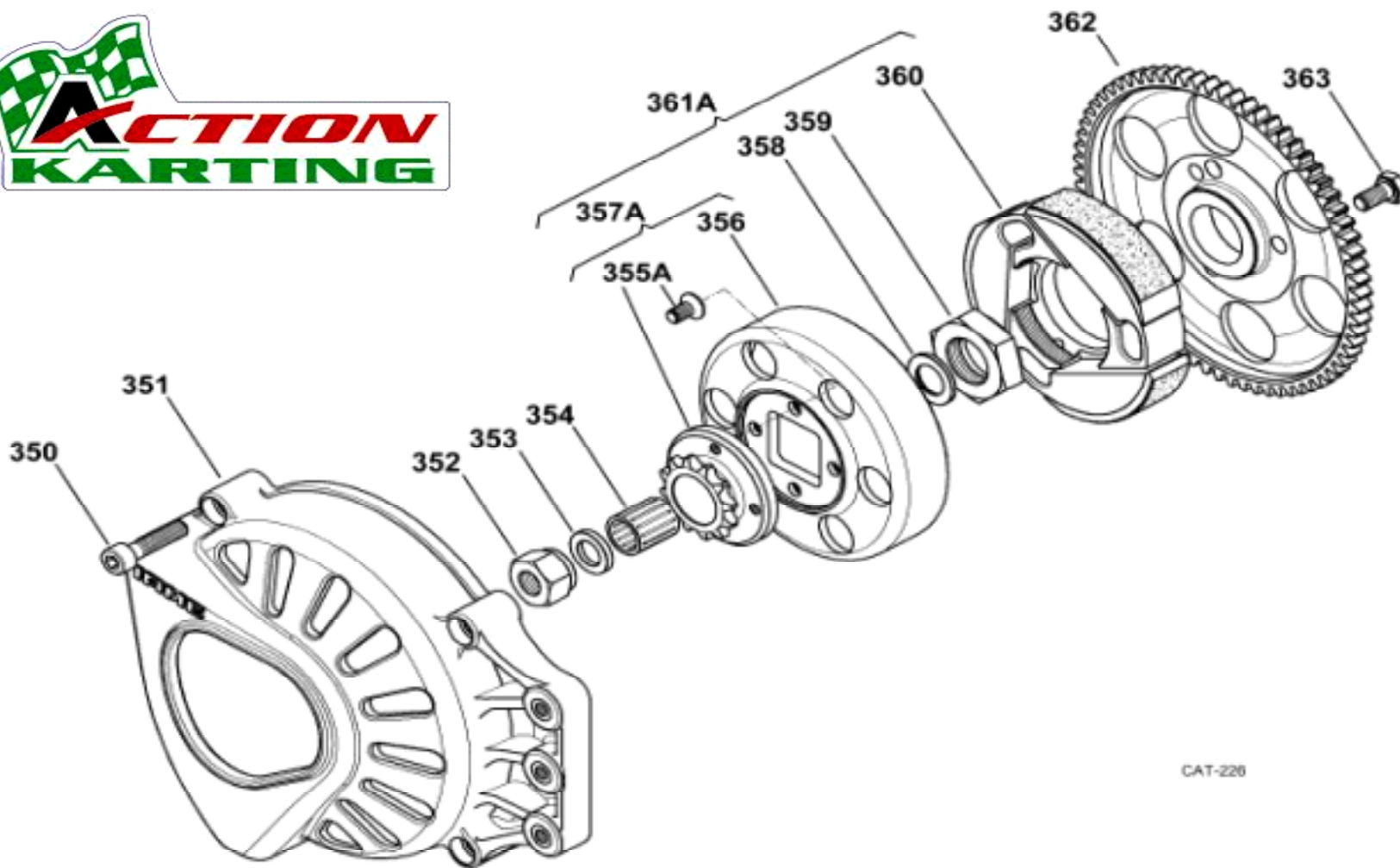
Parilla X30 125cc RL-TaG

ACCENSIONE ELETTRONICA - ELECTRONIC IGNITION - ALLUMAGE ELECTRONIQUE

Fig.	Code	 <i>Descrizione</i>	Dim.	 <i>Description</i>	 <i>Description</i>	X30 125cc RL-TaG													Prix TTC <u>Euro</u>
250	B-35805-A	CAVO massa bobina				X													3,00
260	10561	CANDELA	NGKBR9EG	SPARK PLUG	Bougie BR9EG	X													10,00
260	10561-A	CANDELA	NGKBR10EG	SPARK PLUG	Bougie BR10EG	X													10,00
261	10544	PIPETTA in gomma PVL		PVL Rubber CAP	Capuchon de bougie PVL	X													11,00
270	00378	DADO per antivibrante	M6	Dampener NUT	Ecrou antivibratoire	X													**
271	00302	RONDELLA dado antivibrante	M6	Dampener nut WASHER	Rondelle ecrou antivibrat.	X													**
272	B-35810-A	ANTIVIBRANTE bob. Selettra		Coil Selettra DAMPENER	Silentbloc bobine selettra	X													4,00
273	X30125955	BOBINA Selettra		Selettra COIL	Bobine Selettra	X													39,00
274	00032	VITE accensione Selettra	M5x20	Selettra ignition SCREW	VIS allumage Selettra	X													**
275	00301	RONDELLA vite accensione	M5	Ignition screw WASHER	Rondelle vis allumage	X													**
276A	X30125950	ACCENSIONE Selettra		Selettra IGNITION	Rotor + stator Selettra	X													149,00
290	A-60904A	FASCIA adesiva per batteria		Fixing STRIPE for battery	Sangle de fixation batterie	X													5,75
291	A-120900	BATTERIA 12V 7,2Ah	FIAMM FG20722	12Volt 7,2Ah BATTERY	Batterie 12Volt 7,2Ah	X													35,00
292	X30125905	SUPPORTO batteria		Battery SUPPORT	Support batterie avec barettes	X													19,00
293A	X30125906-C	MORSETTO supp.batt.con viti		Battery support CLAMP w/screws	Barette alu avec vis	X													7,50
294	X30125942	FUSIBILE	5A	FUSE	Fusible	X													1,25
295	X30125930	CENTRALINA		MINI POWER UNIT	Boîtier électronique	X													179,00
296	X30125941	RELE'		RELAY	Relais	X													69,00
297	X30125936-C	BLOCCO CHIAVE		STARTER KEY ASSEMBLY	Bloc clé démarreur	X													49,00
298	A-60940	CONNETTORE motorino avv.		Electric starter CONNECTOR	Connexion de démarreur	X													2,50
299	X30125935-C	GRUPPO CAVI c/connettori		KIT CABLES with connectors	Faisceau électrique	X													109,00
300	X30125925	NASTRO biadesivo VELCRO		VELCRO fixing strap	Ruban velcro	X													15,00



GRUPPO FRIZIONE / CLUTCH GROUP / GROUPE EMBRAYAGE



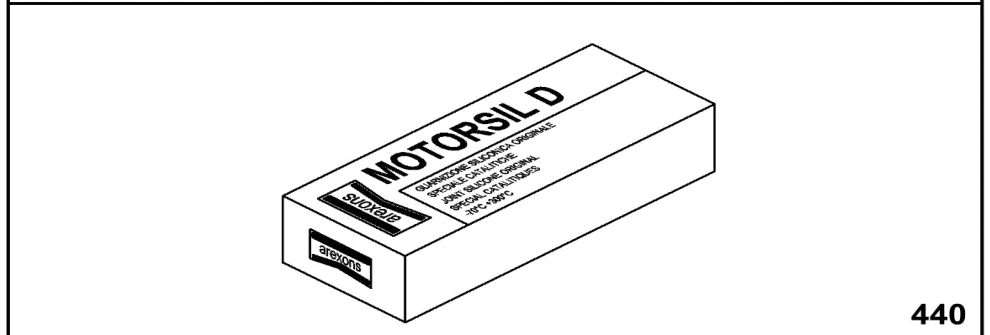
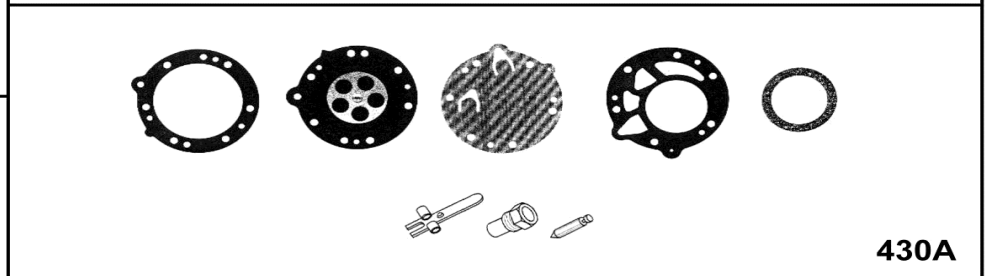
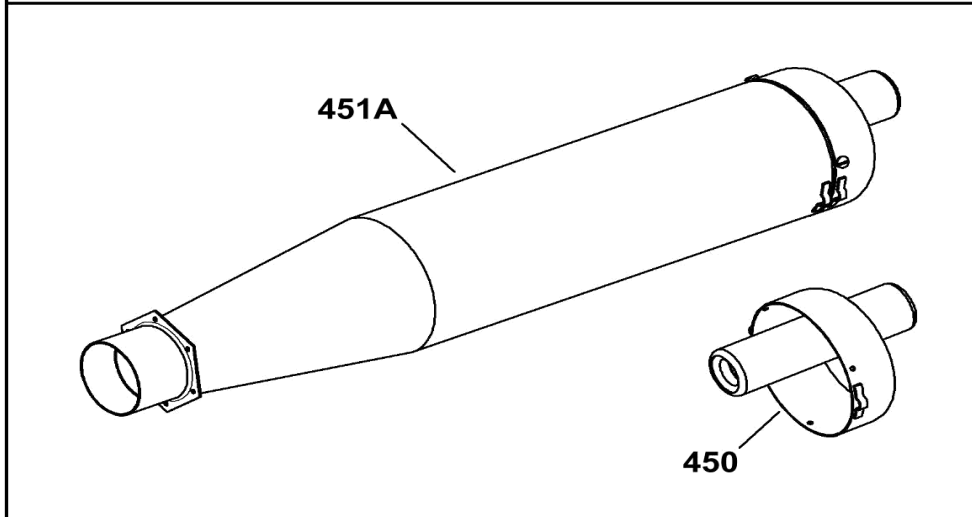
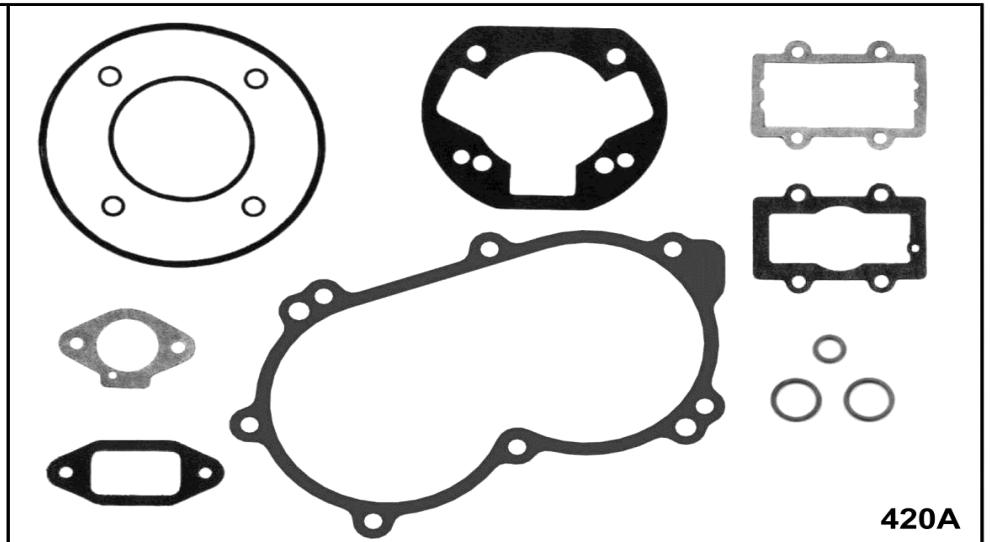
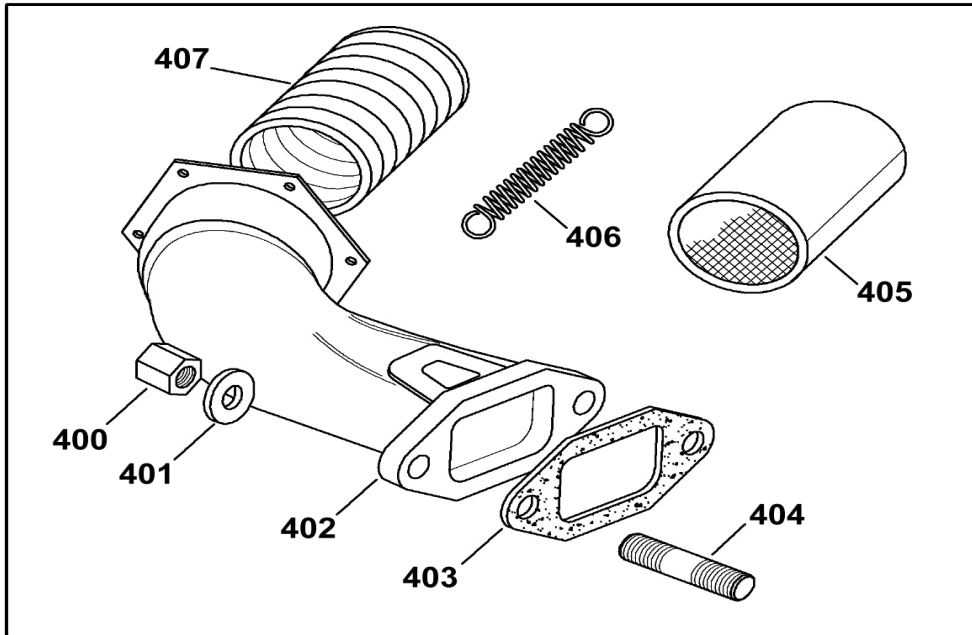
CAT-228

Parilla X30 125cc RL-TaG

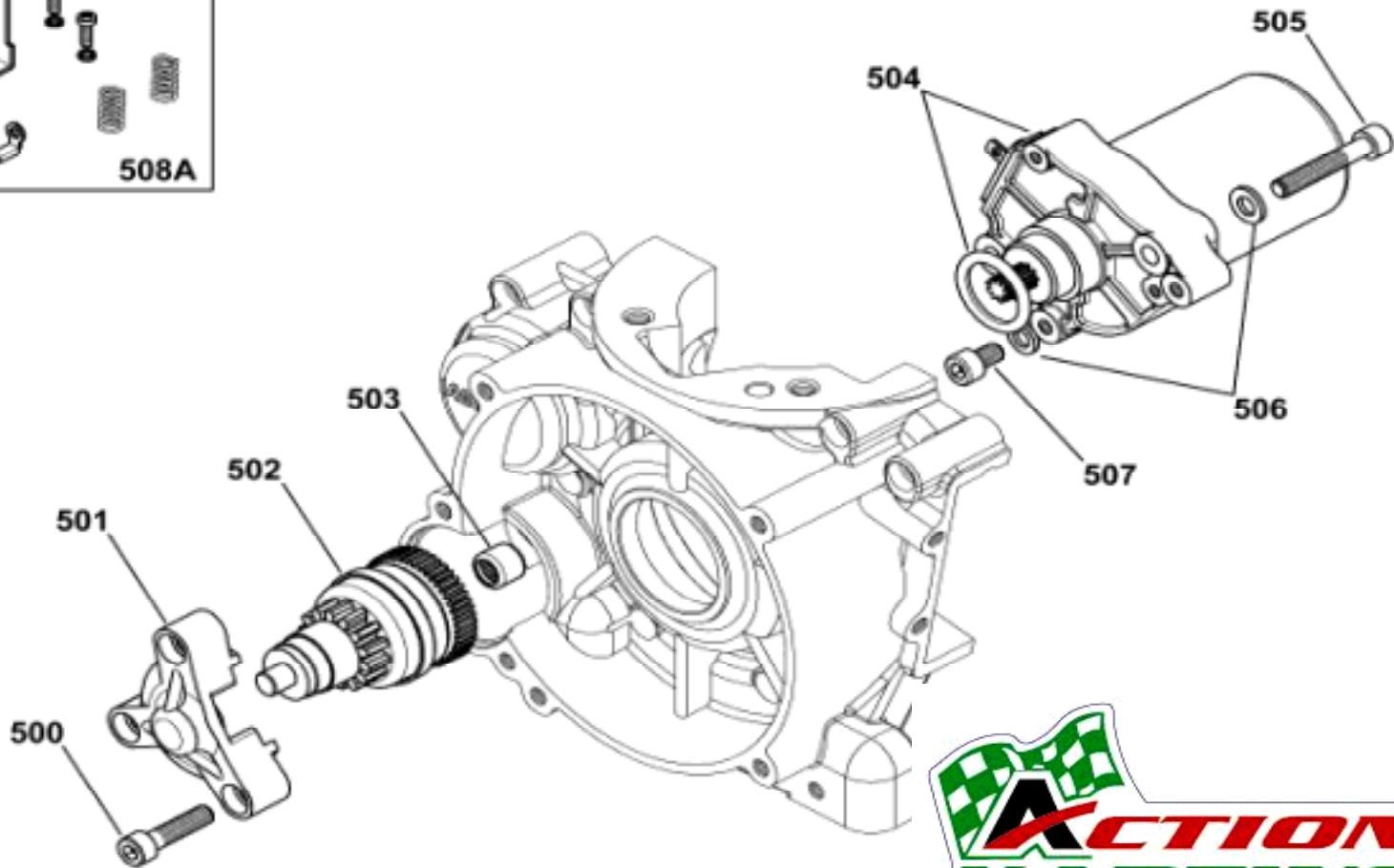
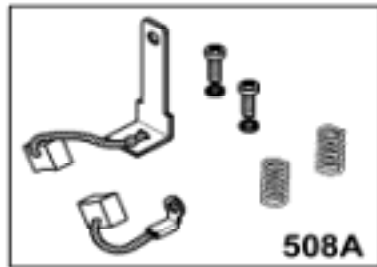
GRUPPO FRIZIONE / CLUTCH GROUP / GROUPE EMBRAYAGE

Fig.	Code		Dim.			X30 125cc RL-TaG												Prix TTC <u>Euro</u>
		<i>Descrizione</i>		<i>Description</i>	<i>Description</i>													
350	00045	VITE coperchio	M6x25	Guard SCREW	VIS de garde	X												**
351	X30125595	COPERCHIO frizione		Clutch GUARD	Carter embayage	X												33,50
352	D-75570	DADO avviatore		Starter NUT	Ecrou vilo M10	X												2,50
353	D-75573	RONDELLA esterna		External WASHER	Rondelle externe	X												4,00
354	D-75598	GABBIA a rulli		Roller CAGE	Cage à aiguille démarreur	X												4,50
355A	X30125554-C	PIGNONE z10 c/ viti		SPROCKET z10 w/screws	Pignon z10 a/vis	X												39,00
355A	X30125555-C	PIGNONE z11 c/ viti		SPROCKET z11 w/screws	Pignon z11 a/vis	X												39,00
355A	X30125556-C	PIGNONE z12 c/ viti		SPROCKET z12 w/screws	Pignon z12 a/vis	X												39,00
356	X30125550	CALOTTA		DRUM	Calotte embayage	X												44,50
357A	X30125550-C	CALOTTA compl.c/pignone Z10		Compl. DRUM w/sprocket Z10	Calotte avec pignon Z10	X												83,50
357A	X30125551-C	CALOTTA compl.c/pignone Z11		Compl. DRUM w/sprocket Z11	Calotte avec pignon Z11	X												83,50
357A	X30125552-C	CALOTTA compl.c/pignone Z12		Compl. DRUM w/sprocket Z12	Calotte avec pignon Z12	X												83,50
358	D-75565	RONDELLA interna	1,8 mm	Trust internal WASHER	Rondelle interne	X												4,00
359	X30125560	DADO bloccaggio		Locking NUT	Ecrou moyeu embayage	X												6,50
360	X30125840	MOZZO guarnito		Padded HUB	Moyeu embayage garni	X												135,00
361A	X30125840-C	GRUPPO FRIZIONE Z10		CLUTCH GROUPE Z10	Embayage complet Z10	X												229,00
361A	X30125841-C	GRUPPO FRIZIONE Z11		CLUTCH GROUPE Z11	Embayage complet Z11	X												229,00
361A	X30125842-C	GRUPPO FRIZIONE Z12		CLUTCH GROUPE Z12	Embayage complet Z12	X												229,00
362	X30125830	CORONA avviamento	Z70	Starter driver WHEEL	Roue dentée demarreur	X												72,50
363	00161	VITE fissaggio corona	M6x12	Starter wheel SCREW	Vis fix, moyeu embayage	X												2,00

**SISTEMA SCARICO E SERIE GUARNIZIONI / EXHAUST SYSTEM & GASKETS SET
SISTEME ACHAPPEMENT ET SERIE JOINTS.**



GRUPPO AVVIATORE ELETTRICO-ELECTRIC STARTER GROUP-GROUPE DEMARREUR ELECTRIQUE



SISTEMA RAFFREDDAMENTO LIQUIDO / WATER COOLING SYSTEM / SYSTEME REFROID.LIQUIDE

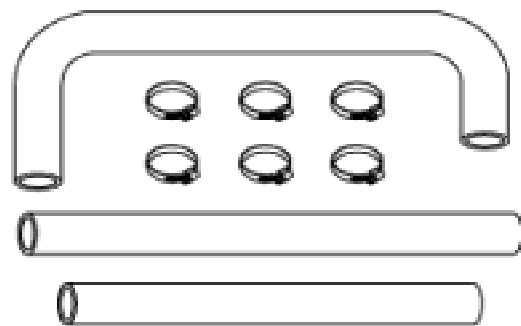


Fig. 550A
Kit n° T-8301A-C

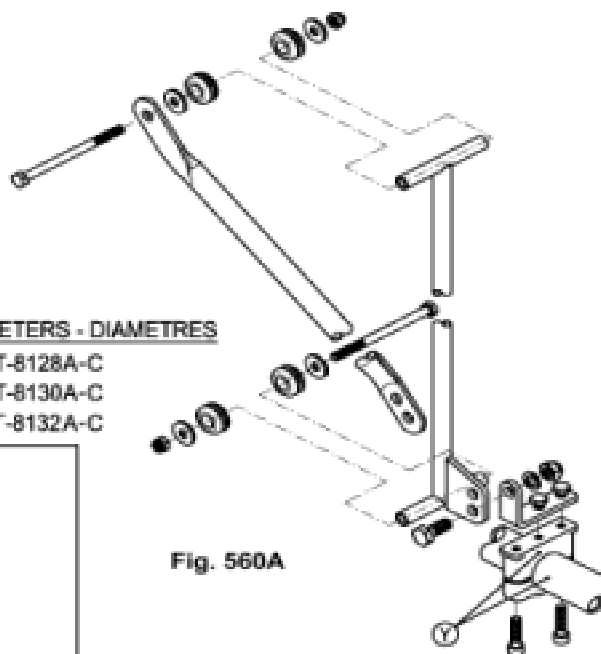


Fig. 560A

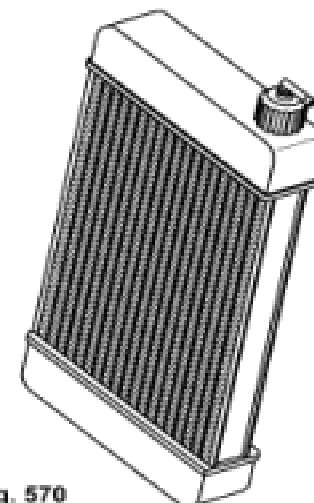
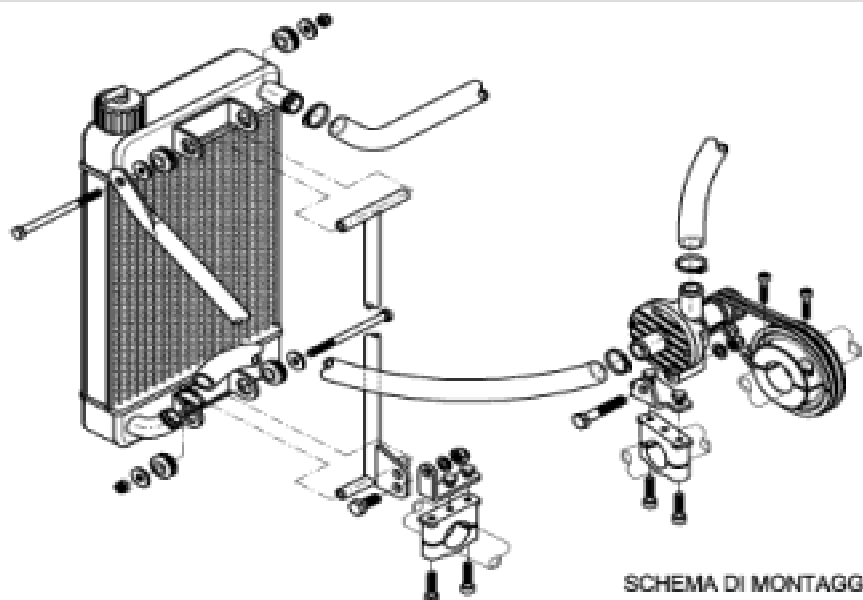


Fig. 570

Kit n° T-8000A



IMPIANTO PER RAFFREDDAMENTO LIQUIDO
WATERCOOLED ENGINE DEVICE
EQUIPEMENT REFROIDISSEMENT LIQUIDE

SCHEMA DI MONTAGGIO
ASSEMBLING LAYOUT
SCHEMA DE MONTAGE

DIAMETRI - DIAMETERS - DIAMETRES

Y= 28mm : Kit n° T-8128A-C
Y= 30mm : Kit n° T-8130A-C
Y= 32mm : Kit n° T-8132A-C

NOTE

Il gruppo POMPA comprende il SUPPORTO, la PULEGGIA e gli ANELLI di gomma.

The PUMP group includes CLAMP, PULLEY and rubber RINGS.

Le groupe POMPE comprend le SUPPORT, la POULIE et les COURROIES.

DIAMETRI - DIAMETERS - DIAMETRES

K=30mm + W=30mm : Kit n° T-8202-C
K=30mm + W=35mm : Kit n° T-8202-C1
K=30mm + W=40mm : Kit n° T-8202-C2
K=32mm + W=40mm : Kit n° T-8202-C3
K=32mm + W=35mm : Kit n° T-8202-C4
K=30mm + W=50mm : Kit n° T-8202-C5
K=32mm + W=50mm : Kit n° T-8202-C6
K=32mm + W=30mm : Kit n° T-8202-C7

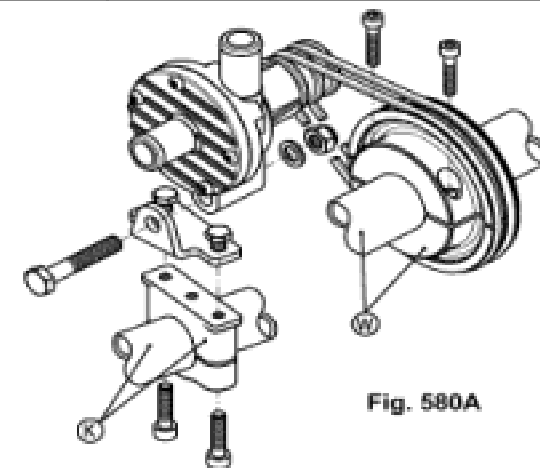





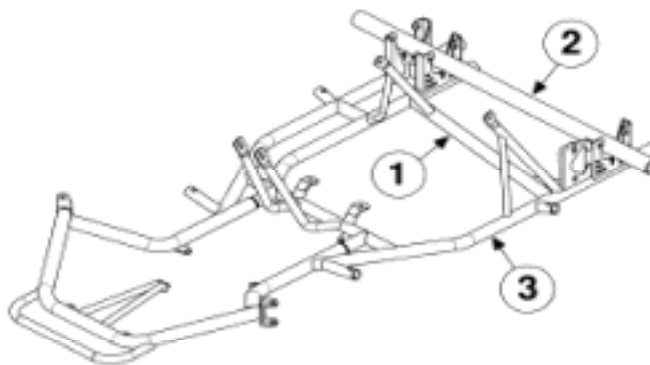
Fig. 580A

Fig.	Code		Dim.			X30 125cc RL-TaG					Prix TTC Euro
		Descrizione		Description	Description						
550A	T-8301A-C	Kit TUBAZIONE pompa n.t.		Complete PIPE kit n.t.	Kit durits refroidissement	X					29,00
560A	T-8128A-C	Kit SUPP. RADIATORE	28mm	RADIATOR SUPPORTS kit	Supp, radiateur	X					59,00
560A	T-8130A-C	Kit SUPP. RADIATORE	30mm	RADIATOR SUPPORTS kit	Supp, radiateur	X					59,00
560A	T-8132A-C	Kit SUPP. RADIATORE	32mm	RADIATOR SUPPORTS kit	Supp, radiateur	X					59,00
570	T-8000A	RADIATORE		RADIATOR	Radiateur	X					136,50
580A	T-8202-C	Gruppo POMPA completo	30/30mm	Complete PUMP group	Groupe POMPE complet	X					99,00
580A	T-8202-C1	Gruppo POMPA completo	30/35mm	Complete PUMP group	Groupe POMPE complet	X					99,00
580A	T-8202-C2	Gruppo POMPA completo	30/40mm	Complete PUMP group	Groupe POMPE complet	X					99,00
580A	T-8202-C3	Gruppo POMPA completo	32/40mm	Complete PUMP group	Groupe POMPE complet	X					99,00
580A	T-8202-C4	Gruppo POMPA completo	32/35mm	Complete PUMP group	Groupe POMPE complet	X					99,00
580A	T-8202-C5	Gruppo POMPA completo	30/50mm	Complete PUMP group	Groupe POMPE complet	X					99,00
580A	T-8202-C6	Gruppo POMPA completo	32/50mm	Complete PUMP group	Groupe POMPE complet	X					99,00
580A	T-8202-C7	Gruppo POMPA completo	32/30mm	Complete PUMP group	Groupe POMPE complet	X					99,00
590A	T-8400-C	TERMOSTATO compl. 50°		THERMOSTAT 50° compl.	Calorstat compl. 50°	X					79,00

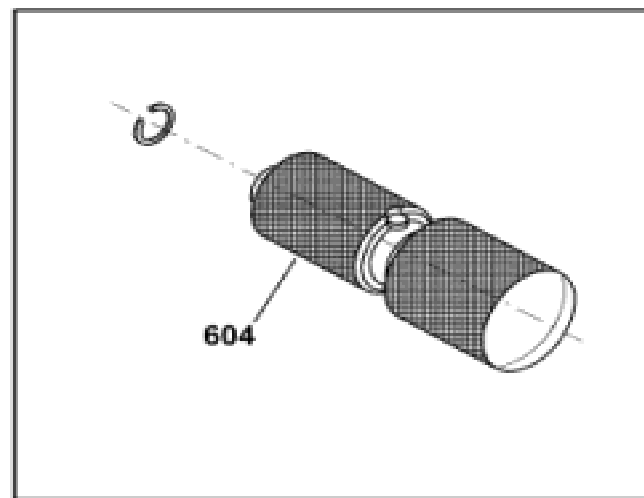
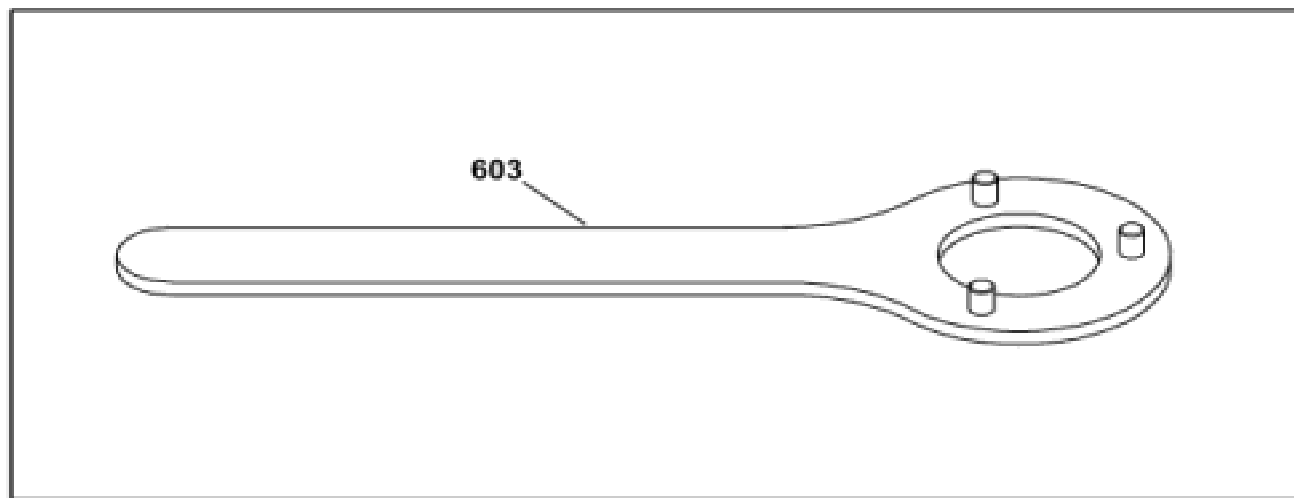
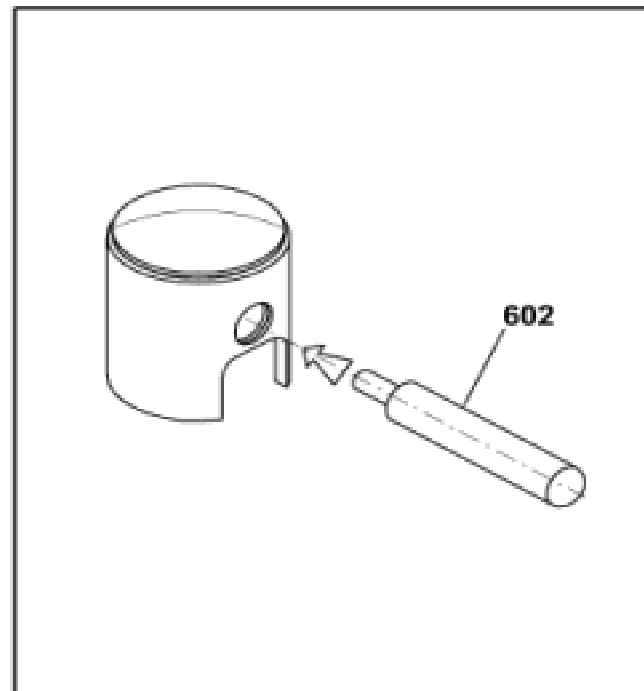
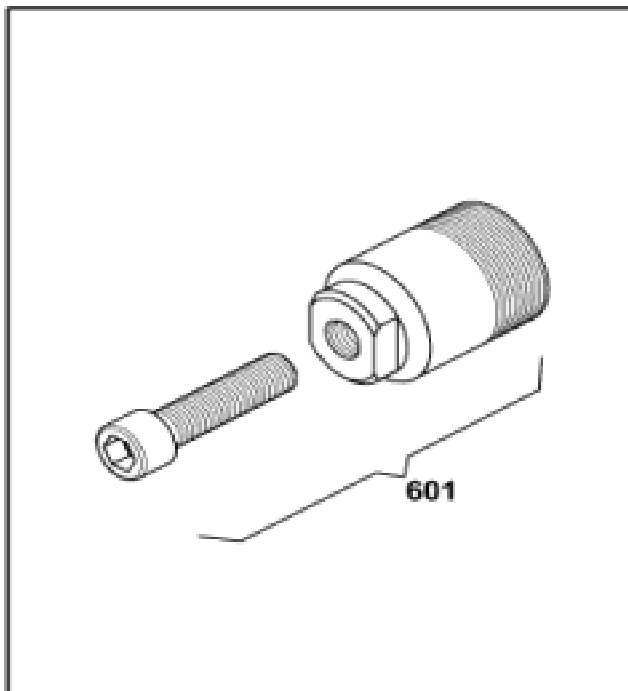
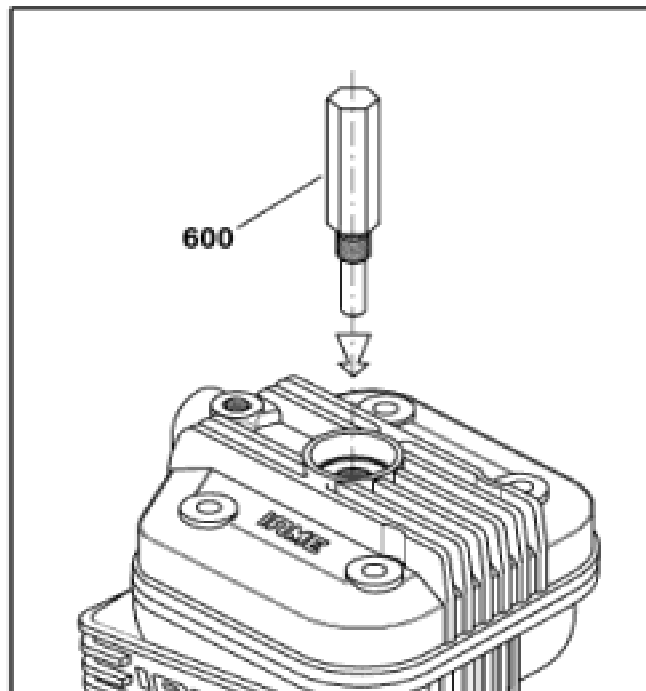
Per evitare errori nella scelta dei KITS, è opportuno citare nei Vs. ordini i diametri n°1, n°2 e n°3 indicati dal disegno del kart sul quale i kits verranno montati.

To avoid mistakes when ordering the KITS, we suggest you to mention the n°1, n°2 and n°3 diameters, shown on the drawing of the chassis on which the kits will be fitted in.

Afin d'éviter des erreurs dans le choix des KITS il faudra citer dans Vos commandes les diamètres n°1, n°2 et n°3 indiqués sur le schéma du chassis sur lequel les kits seront installés.



ESTRATTORI & ATTREZZI - PULLER & TOOLS - EXTRACTEURS & OUTILS



Parilla

24 TIMES 100cc WORLD CHAMPION



COP-128/A